

Human/Cynomolgus Activin RIIB/ACVR2B Protein

Cat. No. ARB-HM32B

Description

Source	Recombinant Human/Cynomolgus Activin RIIB/ACVR2B Protein is expressed from HEK293 with mFc (IgG1) tag at the C-terminus. It contains Ser19-Thr137 (Human) / Ser40-Thr158 (Cynomolgus).
Accession	Q13705-1(Human) / XP_045242398.1(Cynomolgus)
Molecular Weight	The protein has a predicted MW of 39.32 kDa. Due to glycosylation, the protein migrates to 50-70 kDa based on Bis-Tris PAGE result.
Endotoxin	Less than 1 EU per µg by the LAL method.
Purity	> 95% as determined by Bis-Tris PAGE; > 95% as determined by HPLC

Formulation and Storage

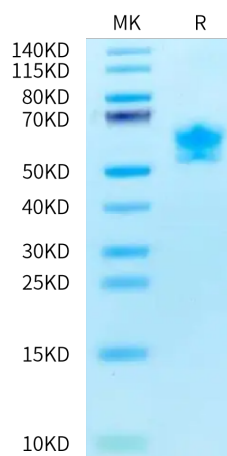
Formulation	Lyophilized from 0.22 µm filtered solution in PBS (pH 7.4). Normally 8% trehalose is added as protectant before lyophilization.
Reconstitution	Centrifuge the tube before opening. Reconstituting to a concentration more than 100 µg/ml is recommended. Dissolve the lyophilized protein in distilled water.
Storage	-20 to -80°C for 12 months as supplied from date of receipt. -80°C for 3 months after reconstitution. Recommend to aliquot the protein into smaller quantities for optimal storage. Please minimize freeze-thaw cycles.

Background

ActRIIB (activin receptor type-2B) is an activin receptor subtype constitutively expressed in the whole body, playing a role in cellular proliferation, differentiation, and metabolism. For its various physiological activities, ActRIIB interacts with activin and multiple other ligands including myostatin (MSTN), growth differentiation factor 11 (GDF11), and bone morphogenetic protein 9 (BMP9).

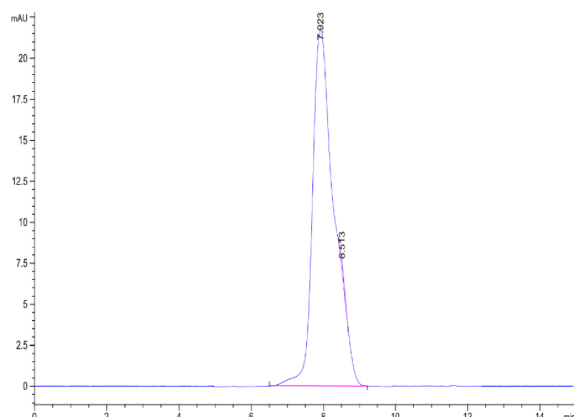
Assay Data

Bis-Tris PAGE



Human/Cynomolgus Activin RIIB on Bis-Tris PAGE under reduced condition. The purity is greater than 95%.

SEC-HPLC



The purity of Human/Cynomolgus Activin RIIB is greater than 95% as determined by SEC-HPLC.

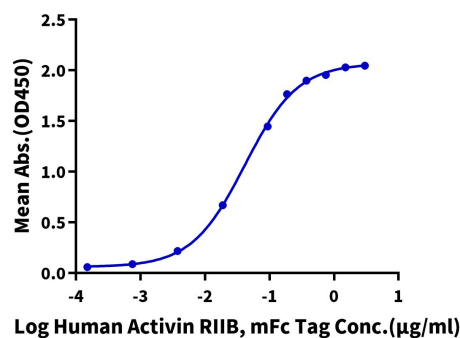
Cat. No. ARB-HM32B

Assay Data

ELISA Data

Human Activin RIIB, mFc Tag ELISA

0.5µg Human Activin A, No Tag Per Well

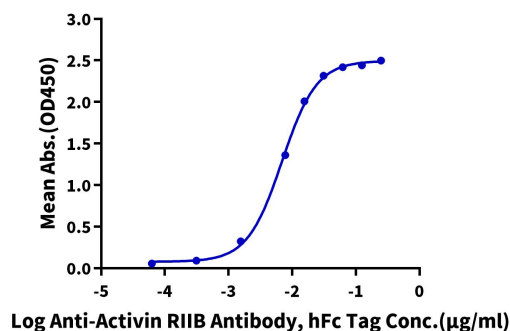


Immobilized Human Activin A, No Tag at 5 µg/ml (100 µl/well) on the plate. Dose response curve for Human/Cynomolgus Activin RIIB, mFc Tag with the EC50 of 41.4 ng/ml determined by ELISA (QC Test).

ELISA Data

Human Activin RIIB, mFc Tag ELISA

0.05µg Human Activin RIIB, mFc Tag Per Well

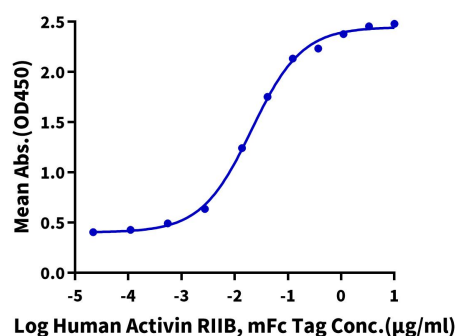


Immobilized Human/Cynomolgus Activin RIIB, mFc Tag at 0.5 µg/ml (100 µl/well) on the plate. Dose response curve for Anti-Activin RIIB Antibody, hFc Tag with the EC50 of 6.9 ng/ml determined by ELISA.

ELISA Data

Human Activin RIIB, mFc Tag ELISA

0.1µg Human/Mouse/Rat GDF-8, No Tag Per Well



Immobilized Human/Mouse/Rat GDF-8, No Tag at 1µg/ml (100µl/well) on the plate. Dose response curve for Human/Cynomolgus Activin RIIB, mFc Tag with the EC50 of 20.8ng/ml determined by ELISA.